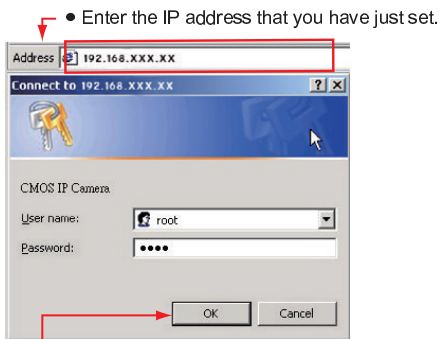


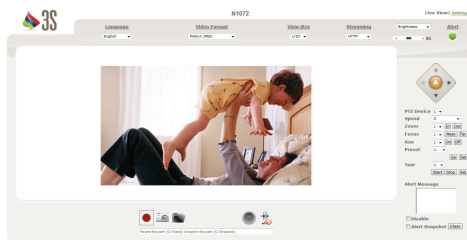
Step4 Enter the Main Page

- 1 Start**
Open a new Internet Explorer window.
- 2 Enter the IP address and login**
Enter the new IP address and key in the username "root" and password "root".



- When the login screen appears, key in root in the User Name and Password fields. Click OK.

- 3 Enter the control screen**
You can enter the control screen when the username and password are confirmed.



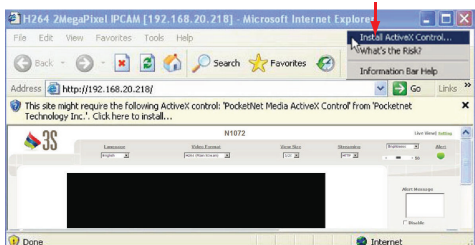
Quick Guide

N1071/N1072 IP Box Camera

Step5 Install Internet Explorer Active X Controller

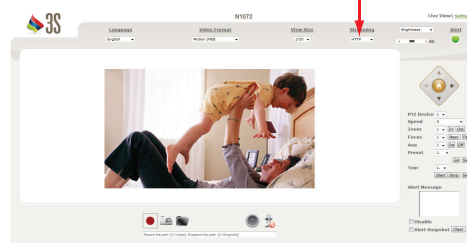
- 1 Install ActiveX**
When the username and password are confirmed, a control setup screen pops up under the IE address bar. Click "Install ActiveX Control" to install the controls.

- Click Install ActiveX Control



- 3 Camera operation and interface**
When ActiveX Control is installed successfully, you can see the camera image and interface.

- Select the HTTP mode if the image is disabled.



- 2 The security warning screen appears. Click Install.**

The ActiveX Control is named ActiveX Control. This software is well certified. You can use it without any doubts on its validity.

- Click Install

