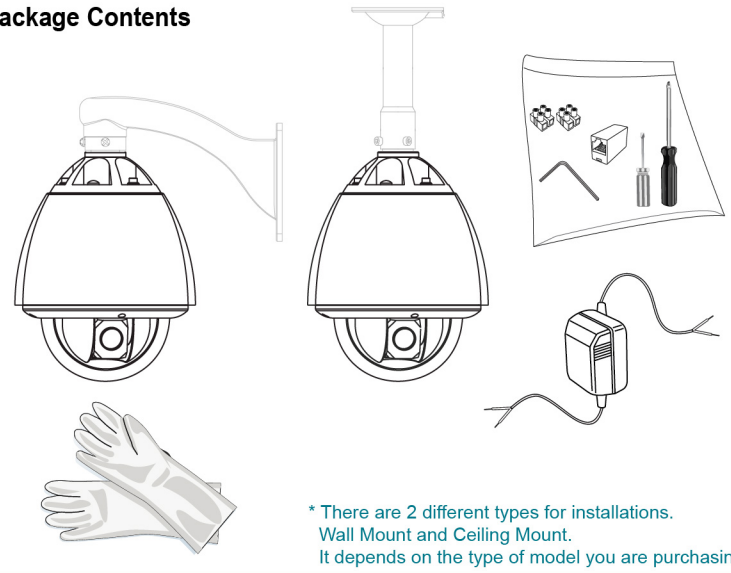




# Speed Dome Network Camera Hardware Installation

## Package Contents



\* There are 2 different types for installations. Wall Mount and Ceiling Mount. It depends on the type of model you are purchasing.

### 1 Start the Installation Structure

### 2 Stabilize the Hardware

Use the screwdriver to lock the bracket and Pedestal securely by three M6 screws after the I/O cables are put into the bracket.

### 3 Communication Switch Setting

Set the address, system baud rate and protocol by configuring DIP switches SW1 and SW3 which are located on the bottom of the dome camera body.

Socket Plug-In

Pedestal Dome camera body

#### 3-1

Assembling the dome camera body by plug-in the socket and pressing the lock gently downward to the pedestal with two hands on the side of the dome camera body.

• Make sure the plug-in is fully locked by the socket .

### 4 Attach the Dome cover to the pedestal with rope.

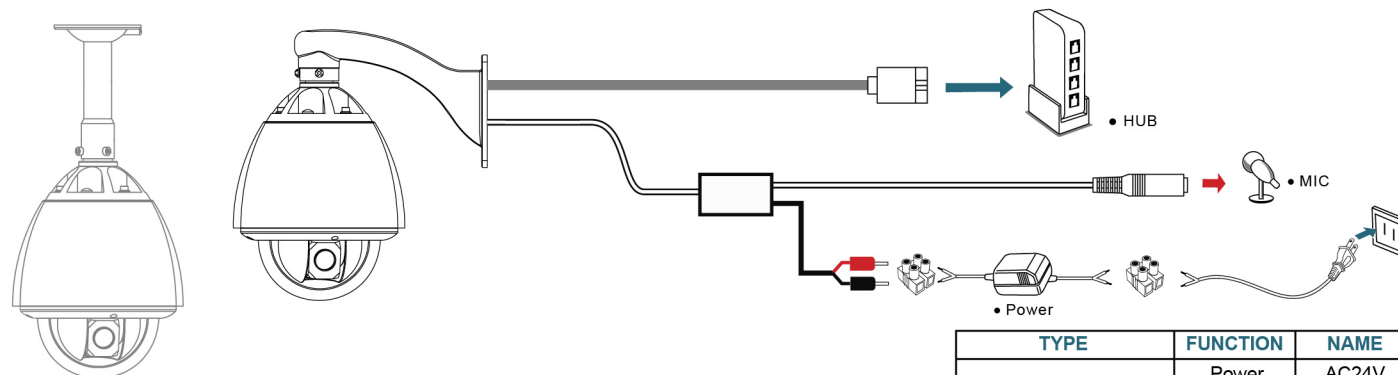
### 5 Tripod Mounting

### 6

To use this product outdoors, it must be installed in an approved outdoor housing.



# Speed Dome Network Camera Connection Diagram



TYPE	FUNCTION	NAME	DESCRIPTION
System Interface	Power	AC24V	AC24V, Recommend use matched power
	Ethernet	ETHERNET	10M/100M adaptive, RJ45 interface
Audio / Video Interface	Audio Input	Audio In	BNC(Q9) interface, input voltage ≤1V

\* There are 2 different types for installations. Wall Mount and Ceiling Mount. It depends on the type of model you are purchasing.

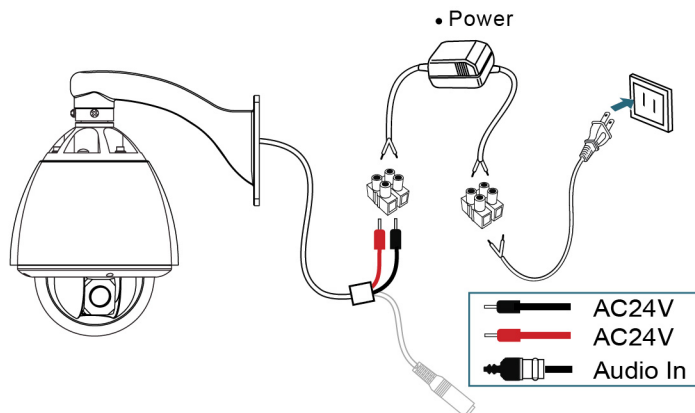
## Connect the product to the switch hub and PC.

### 1 Connecting up

Prepare the product, your PC and switch hub ready for connection.  
Make sure that your PC has a LAN port available for connection to the network cable of the product.

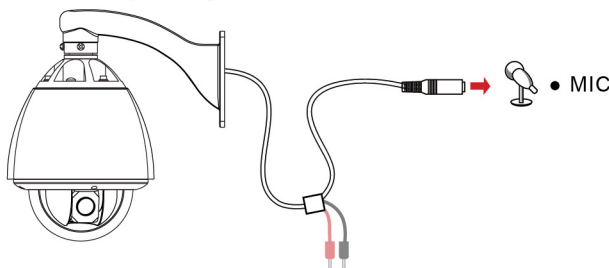
### 2 Connect to the power source

Connect the product to the power source.  
Please connect with your power adaptor directly.



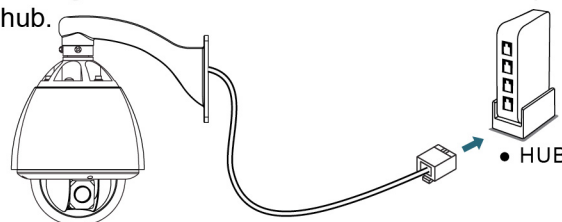
### 3 Connect to microphone in

Use the audio in cable to connect the microphone with 3.5mm phone jack into the "MIC IN".



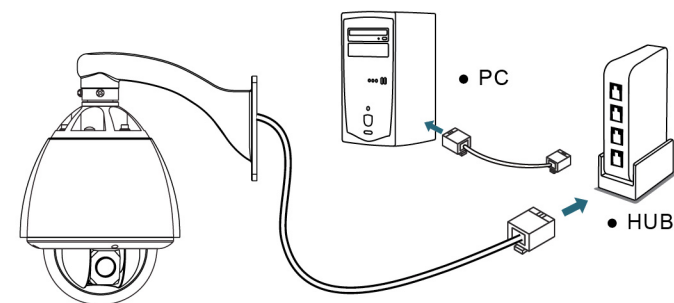
### 4 Connect to the switch hub

Use a network cable and plug it in the LAN port of the product. Plug the other end of the cable in the LAN port of the hub.



### 5 Connect the switch hub to your PC

Prepare the product, your PC and switch hub ready for connection.  
Make sure that your PC has a LAN port available for connection to the network cable of the product.



### 6 Turn on the power.

Turn on the power of the PC and hub.

